

NOTES:

1. PROPOSED PARKING STALLS = 25 (INCLUDING 1 ACCESSIBLE).
2. PROPOSED BUILDING USAGE BREAKDOWN:
 - OFFICE/BREAKROOM = 1,500 SF
 - STORAGE = 40,000 SF
3. LIGHTING TO BE DARK SKY COMPLIANT ON BUILDING EXTERIOR.
4. SIGNAGE WILL BE SILT SOCK LOGO ON BUILDING EXTERIOR.
5. TOTAL LOT AREA = 331,705 SF. EXISTING IMPERVIOUS SURFACE AREA = 76,537 SF (23.1%). PROPOSED IMPERVIOUS AREA = 172,998 SF (52.2%).
6. SITE SOIL TYPES ARE BARENT LOAM AND RONEYEY LOAM, HYDROLOGIC SOIL GROUP C/D (PER WEB SOIL SURVEY).



SITE AND UTILITY PLAN
1"=20'



REVIEW PLAN
NOT FOR CONSTRUCTION

STARK ENGINEERING
www.starkengineer.com
320-249-2611
Stark Rapids, Minnesota

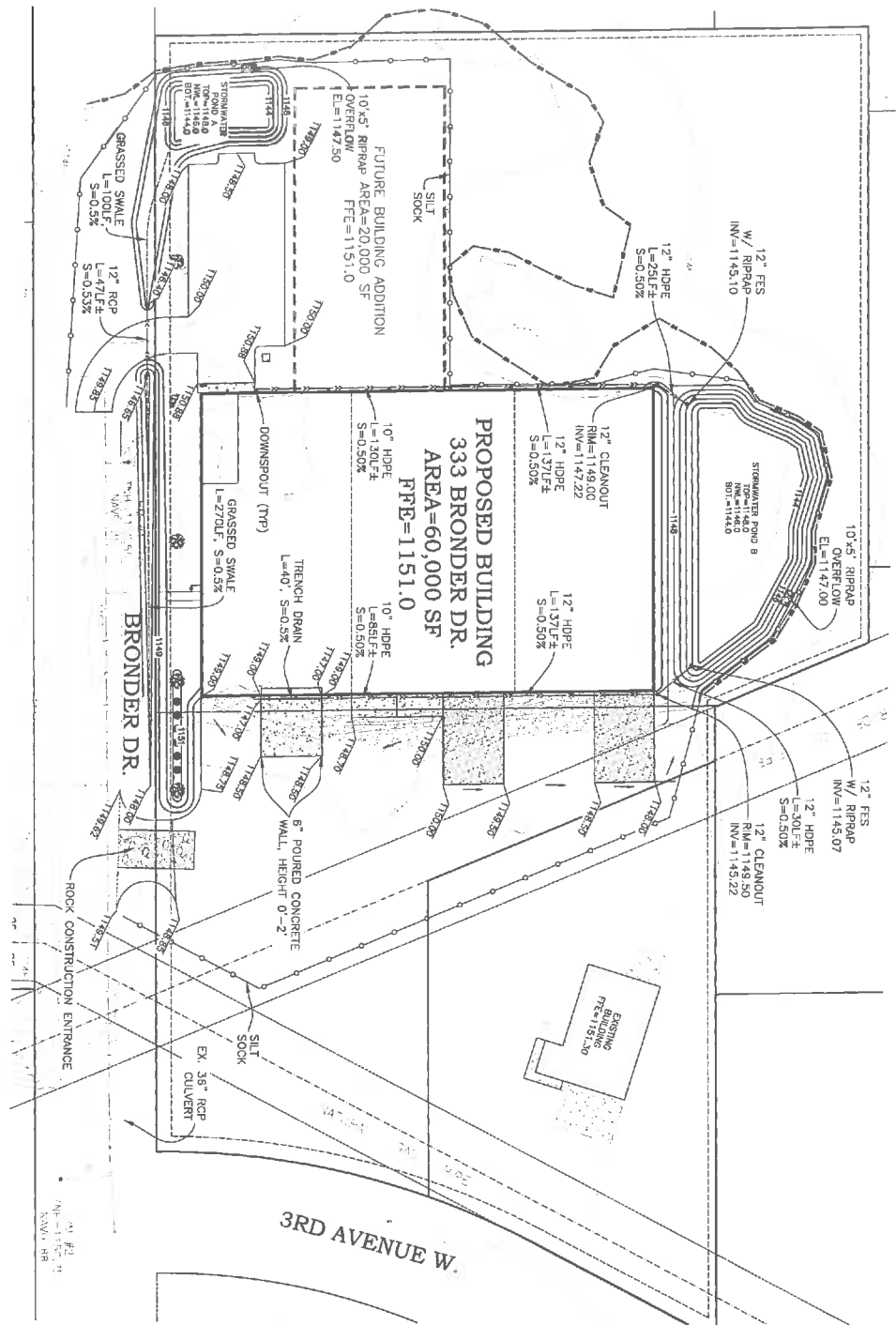
NO.	DATE	DESCRIPTION
1	1/10/2018	ISSUED FOR CITY REVIEW
2	1/27/2018	REVISED FOR CITY REVIEW

PROPOSED BUILDING SITE
SILT SOCK INC.
333 BRONDER DRIVE
FOLEY, MINNESOTA

SITE AND UTILITY PLAN

DATE: 1-10-18
DRAWN BY: [Signature]
CHECKED BY: [Signature]

Sheet No. **C1** of **2**



GRADING PLAN



1"=50'

REVIEW PLAN
NOT FOR CONSTRUCTION



www.starkengineering.com
320-242-2211
Stark Rapids, Minnesota

NO.	DATE	DESCRIPTION
1	1/22/2014	REVISED FOR CITY REVIEW
1	1/22/2014	REVISED FOR CITY REVIEW

GRADING AND EROSION CONTROL PLAN

PROPOSED BUILDING SITE
SILT SOCK INC.
333 BRONDER DRIVE
FOLEY, MINNESOTA

Sheet No. 02 of 2
Date: 01/21/14
Drawn by: [blank]
Checked by: [blank]