

**SITE PLAN KEY NOTES:**

- ① NEW LIGHT POLE
- ② NEW ACCESSIBLE PARKING STALL
- ③ EXISTING ACCESSIBLE VAN PARKING STALL
- ④ ACCESSIBLE AISLE
- ⑤ EXISTING CONCRETE WALK
- ⑥ EXISTING CONCRETE STOOP
- ⑦ EXISTING ACCESSIBLE CONC. SIDEWALK RAMP
- ⑧ EXISTING LIGHT POLE
- ⑨ EXISTING ACCESSIBLE PARKING STALL
- ⑩ FUTURE CONSTRUCTION VEHICLE ACCESS

**PARKING LOT EXPANSION**

NEW LIFE CHURCH - PROPERTY PID NO: 130001514

FOLEY, MN



**The Dennis Baty & Associates Group**  
architects & engineers incorporated

Minnesota

22770 Imperial Avenue North Forest Lake, MN 55025  
Email: info@dennisbatty.com Phone: 651-464-3756 Fax: 651-464-3794

Missouri

3242 West Windward Pass Springfield, MO 65810  
Phone: 417-889-8540 Fax: 417-889-1644

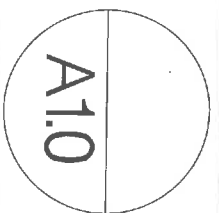
DRAWN BY:

DATE

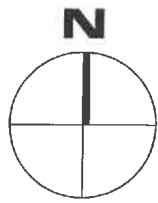
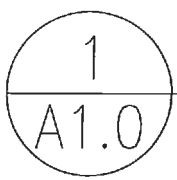
COMMISSION NO: 200920

PAGE

1 OF 1



**SITE PLAN**





**The Dennis Batty & Associates Group**  
architects & engineers  
incorporated

**MINNESOTA**

22770 IMPERIAL AVENUE N.  
FOREST LAKE, MN 55025  
EMAIL: info@dennisbatty.com  
PHONE: 651-464-3756  
FAX: 651-464-3794

**MISSOURI**

3242 WEST WINDWARD PASS  
SPRINGFIELD, MO 65810  
EMAIL: info@dennisbatty.com  
PHONE: 417-889-8540  
FAX: 417-889-1644

**DRAWN BY:**

**COMMISSION NUMBER:**  
2009.20

**ISSUE DATE:**  
11/4/16

**PLOT DATE:**  
11/4/16

**REVISIONS:**

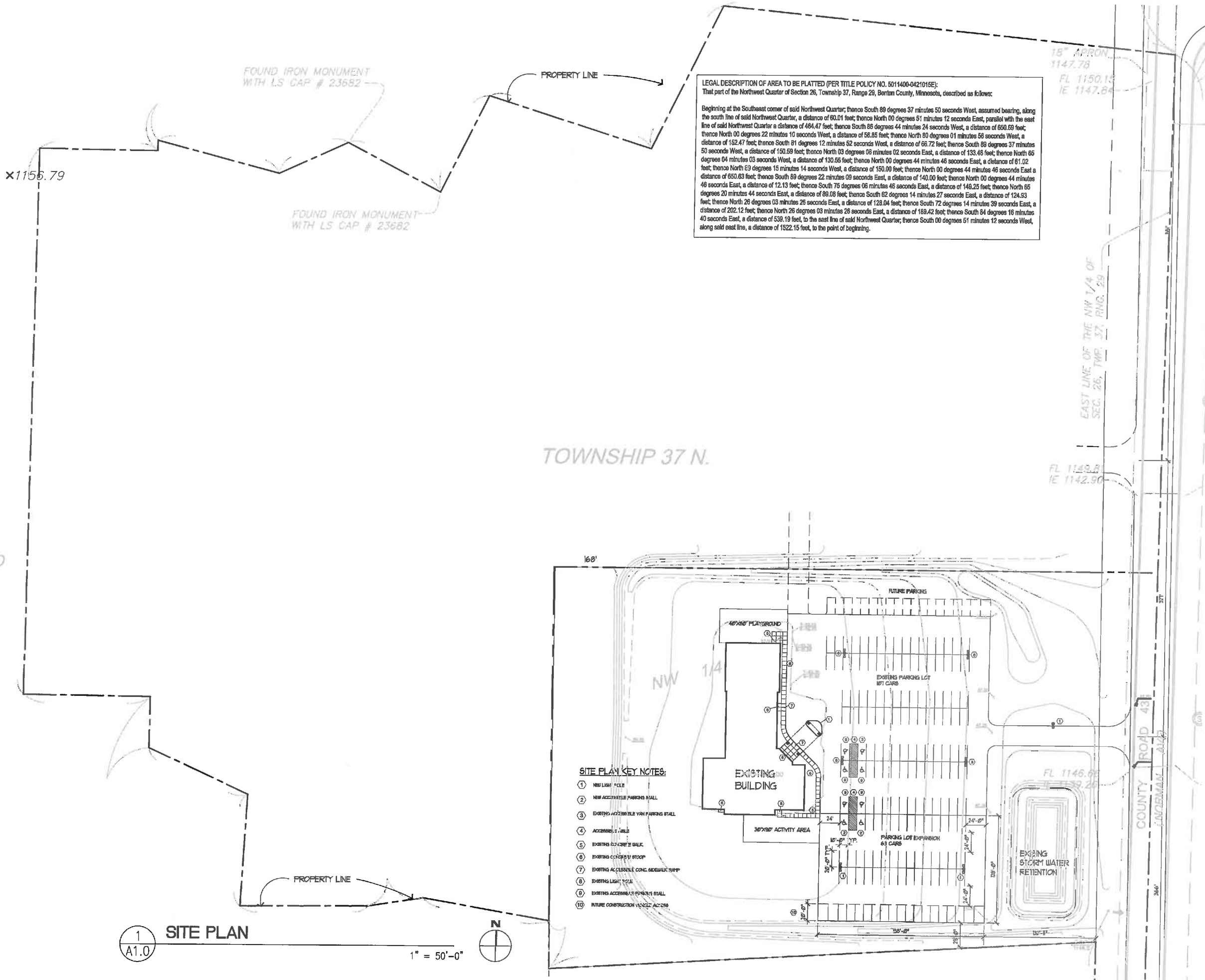
**NEW LIFE CHURCH  
FOLEY, MN**

**PROPERTY PID NO:  
130001514**

**PARKING LOT  
EXPANSION**

**A1.0**

**LEGAL DESCRIPTION OF AREA TO BE PLATTED (PER TITLE POLICY NO. 5011400-0421016E):**  
That part of the Northwest Quarter of Section 26, Township 37, Range 29, Benton County, Minnesota, described as follows:  
Beginning at the Southeast corner of said Northwest Quarter; thence South 89 degrees 37 minutes 50 seconds West, assumed bearing, along the south line of said Northwest Quarter, a distance of 60.01 feet; thence North 00 degrees 51 minutes 12 seconds East, parallel with the east line of said Northwest Quarter a distance of 464.47 feet; thence South 86 degrees 44 minutes 24 seconds West, a distance of 650.69 feet; thence North 00 degrees 22 minutes 10 seconds West, a distance of 56.85 feet; thence North 80 degrees 01 minutes 56 seconds West, a distance of 152.47 feet; thence South 81 degrees 12 minutes 52 seconds West, a distance of 66.72 feet; thence South 88 degrees 37 minutes 50 seconds West, a distance of 150.59 feet; thence North 03 degrees 08 minutes 02 seconds East, a distance of 133.46 feet; thence North 65 degrees 04 minutes 03 seconds West, a distance of 130.56 feet; thence North 00 degrees 44 minutes 46 seconds East, a distance of 61.02 feet; thence North E9 degrees 15 minutes 14 seconds West, a distance of 150.00 feet; thence North 00 degrees 44 minutes 46 seconds East a distance of 650.63 feet; thence South 89 degrees 22 minutes 09 seconds East, a distance of 140.00 feet; thence North 00 degrees 44 minutes 46 seconds East, a distance of 12.13 feet; thence South 76 degrees 06 minutes 46 seconds East, a distance of 146.25 feet; thence North 65 degrees 20 minutes 44 seconds East, a distance of 89.08 feet; thence South 62 degrees 14 minutes 27 seconds East, a distance of 124.93 feet; thence North 26 degrees 03 minutes 26 seconds East, a distance of 128.04 feet; thence South 72 degrees 14 minutes 39 seconds East, a distance of 202.12 feet; thence North 26 degrees 03 minutes 26 seconds East, a distance of 169.42 feet; thence South 84 degrees 16 minutes 40 seconds East, a distance of 538.19 feet, to the east line of said Northwest Quarter; thence South 00 degrees 51 minutes 12 seconds West, along said east line, a distance of 1522.15 feet, to the point of beginning.



**SITE PLAN KEY NOTES:**

- ① NEW LIGHT POLE
- ② NEW ACCESSIBLE PARKING STALL
- ③ EXISTING ACCESSIBLE VAN PARKING STALL
- ④ ACCESSIBLE RAMP
- ⑤ EXISTING CONCRETE WALK
- ⑥ EXISTING CONCRETE STOOP
- ⑦ EXISTING ACCESSIBLE CONC. SIDEWALK RAMP
- ⑧ EXISTING LIGHT POLE
- ⑨ EXISTING ACCESSIBLE PARKING STALL
- ⑩ FUTURE CONSTRUCTION VEHICLE ACCESS

1 SITE PLAN  
A1.0  
1" = 50'-0"  
N

PLATTED

TOWNSHIP 37 N.

18" APRON  
1147.78  
FL 1150.13  
IE 1147.84

EAST LINE OF THE NW 1/4 OF  
SEC. 26, TWP. 37, RANG. 29

FL 1143.81  
IE 1142.90

FL 1146.61  
IE 1139.26

COUNTY ROAD 43  
CONCRETE